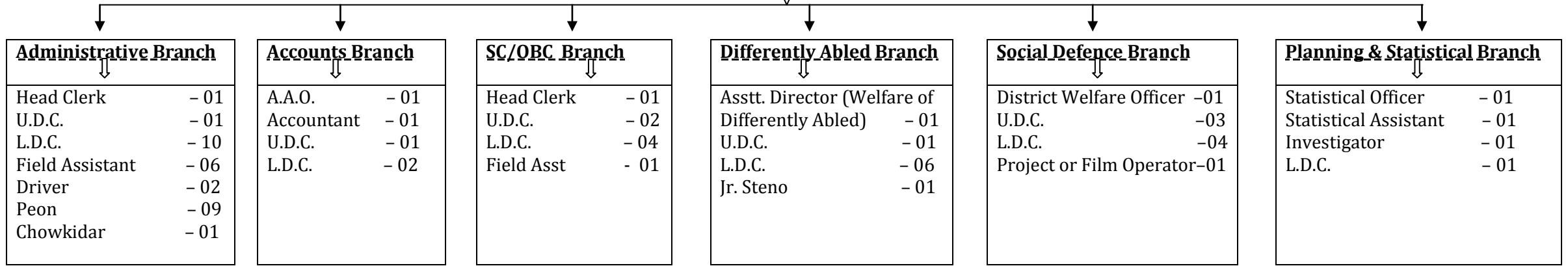


**DIRECTORATE OF SOCIAL WELFARE , PANAJI, GOA
ORGANISATION CHART**

DIRECTOR (SOCIAL WELFARE) - 1

Jr. Stenographer - 1
Driver - 1
Peon - 1

DY. DIRECTOR (SOCIAL WELFARE) - 1



Following Posts are vacant :

- | | | |
|-------------------------------------|-----|--------------------------|
| 1) Asstt. Director (Social Defence) | - 1 | } Group "B" Gazetted |
| 2) District Welfare Officer | - 1 | |
| 3) Instructors | - 2 | |
| 4) Network Engineer | - 1 | } Group "C" Non-Gazetted |
| 5) District Organizer | - 2 | |
| 6) Peon | - 1 | |
| 7) Driver | - 2 | |

NOTE: - 17 Field Assistants posted in BDO Offices at the Taluka level and 1 Field Assistant at DDRC

ANNEXURE ' II '

Date: 06.02.2013

PROFORMA SHOWING SANCTIONED STRENGTH OF THE DEPARTMENT AND VACANCIES IN EACH CATEGORY

Sr. No.	Designation	Pay Scale (`)	Classification	Sanctioned Strength		Number of posts vacant	Date since when vacant	Reasons for non filling up the said vacant posts reflected in Col. No. 7
				Temporary	Permanent			
1	2	3	4	5	6	7	8	9
1.	Director of Social Welfare	PB-3-15600-39100+6600(GP)	Group "A" Gazetted	--	1	--	--	--
2.	Dy. Director (SW)	PB-2- 9300-34800+5400(GP)	Group "A" Gazetted	1	--	--	--	
3.	Asstt. Director (WDA)	PB-2- 9300-34800+4600 (GP)	Group "B" Gazetted	1	--	--	--	
4.	Asstt. Director (SC/OBC Welfare)	PB-2- 9300-34800+4600 (GP)	Group "B" Gazetted	1	--			
5.	Asstt. Director (Social Defence)	PB-2- 9300-34800+4600 (GP)	Group "B" Gazetted	1	--	1	01/01/2007	On Administrative ground
6.	Asstt. Accounts Officer	PB-2- 9300-34800+4200(GP)	Group "B" Gazetted	1	--	--	--	--
7.	Statistical Officer	PB-2- 9300-34800+4600(GP)	Group "B" Gazetted	1	--	--	--	
8.	District Welfare Officer	PB-2- 9300-34800+4200(GP)	Group "B" Gazetted	2	--	1	19/05/2010	On Administrative ground
9.	Instructor	PB-2- 9300-34800+4200(GP)	Group "C" Non-Gazetted	2	--	2	03/08/2011	On Administrative ground
10.	Network Engineer	PB-1- 5200-20200+2800(GP)	Group "C" Non-Gazetted	1	--	1	03/08/2011	On Administrative ground
11.	District Organizer	PB-1- 5200-20200+2400(GP)	Group "C" Non-Gazetted	2	--	2	03/08/2011	On Administrative ground
12.	Head Clerk	PB-2- 9300-34800+4200(GP)	Group "C" Non-Gazetted	2	--	--	--	--

Sr. No.	Designation	Pay Scale (`)	Classification	Sanctioned Strength		Number of posts vacant	Date since when vacant	Reasons for non filling up the said vacant posts reflected in Col. No. 7
				Temporary	Permanent			
1	2	3	4	5	6	7	8	9
13.	Accountant	PB-2- 9300-34800+4200(GP)	Group "C" Non-Gazetted	1	--	--	--	--
14.	Statistical Assistant	PB-2- 9300-34800+4200(GP)	Group "C" Non-Gazetted	1	--	--	--	--
15.	U.D.C.	PB-1- 5200-20200+2400(GP)	Group "C" Non-Gazetted	7	1	--	--	--
16.	Jr. Stenographer	PB-1- 5200-20200+2400(GP)	Group "C" Non-Gazetted	1	1	--	--	--
17.	Investigator	PB-1- 5200-20200+2400(GP)	Group "C" Non-Gazetted	--	1	--	--	--
18.	Project or Film Operator	PB-1- 5200-20200+2400(GP)	Group "C" Non-Gazetted	1	--	--	--	--
19.	L.D.C.	PB-1- 5200-20200+1900(GP)	Group "C" Non-Gazetted	26	2	--	--	--
20.	Field Assistant	PB-1- 5200-20200+1900(GP)	Group "C" Non-Gazetted	20	--	--	--	--
21.	Driver	PB-1- 5200-20200+1900(GP)	Group "C" Non-Gazetted	2	1	--	--	--
22.	Field Worker	PB-1- 5200-20200+1800(GP)	Group "C" Non-Gazetted	156	--	156	17/10/2011	Process started for filling up of the post (for a period of 02 years)
23.	Peon	PB-1- 5200-20200+1800(GP)	Group "C" Non-Gazetted	3	2	1	06/02/2013	On Administrative ground
		IS -1- 4440- 7440+1300(GP)		4				
24.	Chowkidar	To be outsourced	--	1	--	--	--	--
25.	Driver	On contract basis	--	2	--	2	17/10/2011	On consolidated salary of ` 10,000/-
TOTAL				240	09	166		